

Binegar Cemetery – sketch of lych gate on stone base

Height: 4000mm

Roof: L 3500mm, W 4000mm (at eaves)

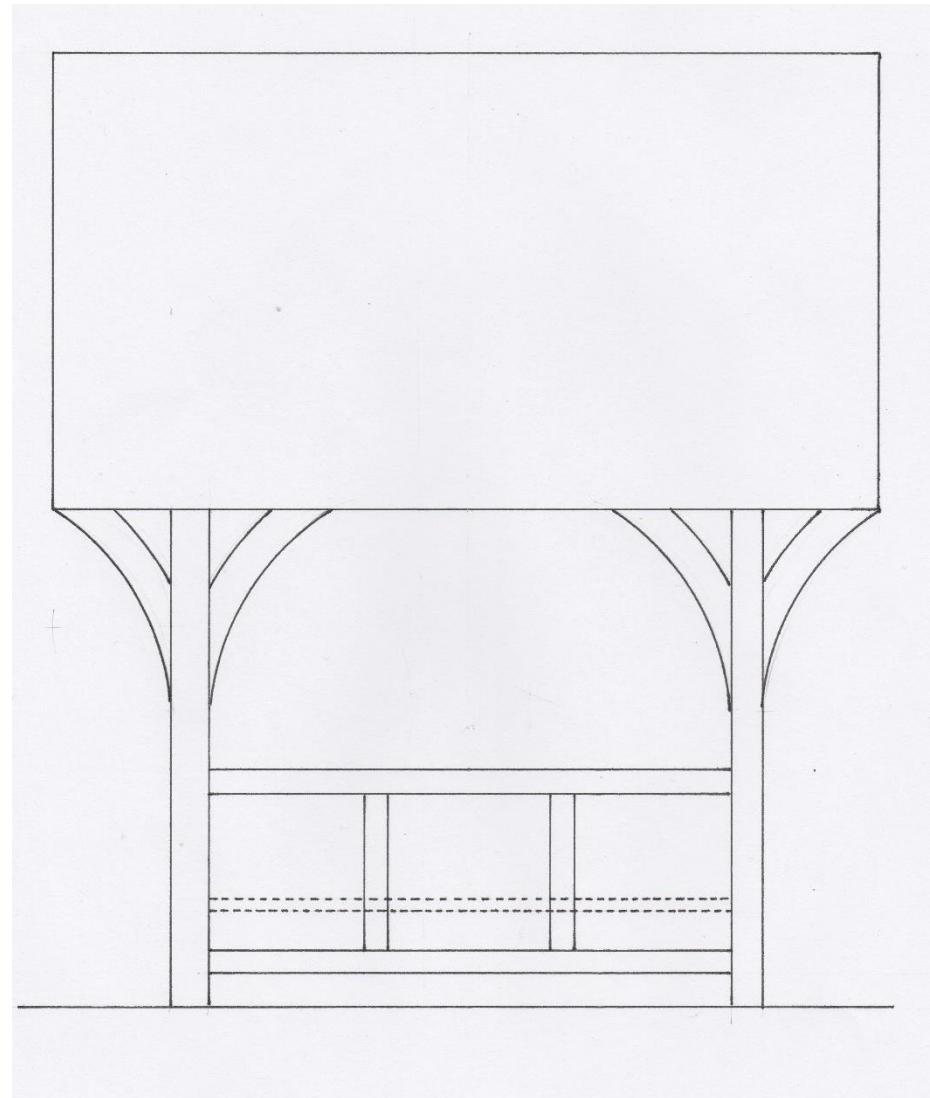
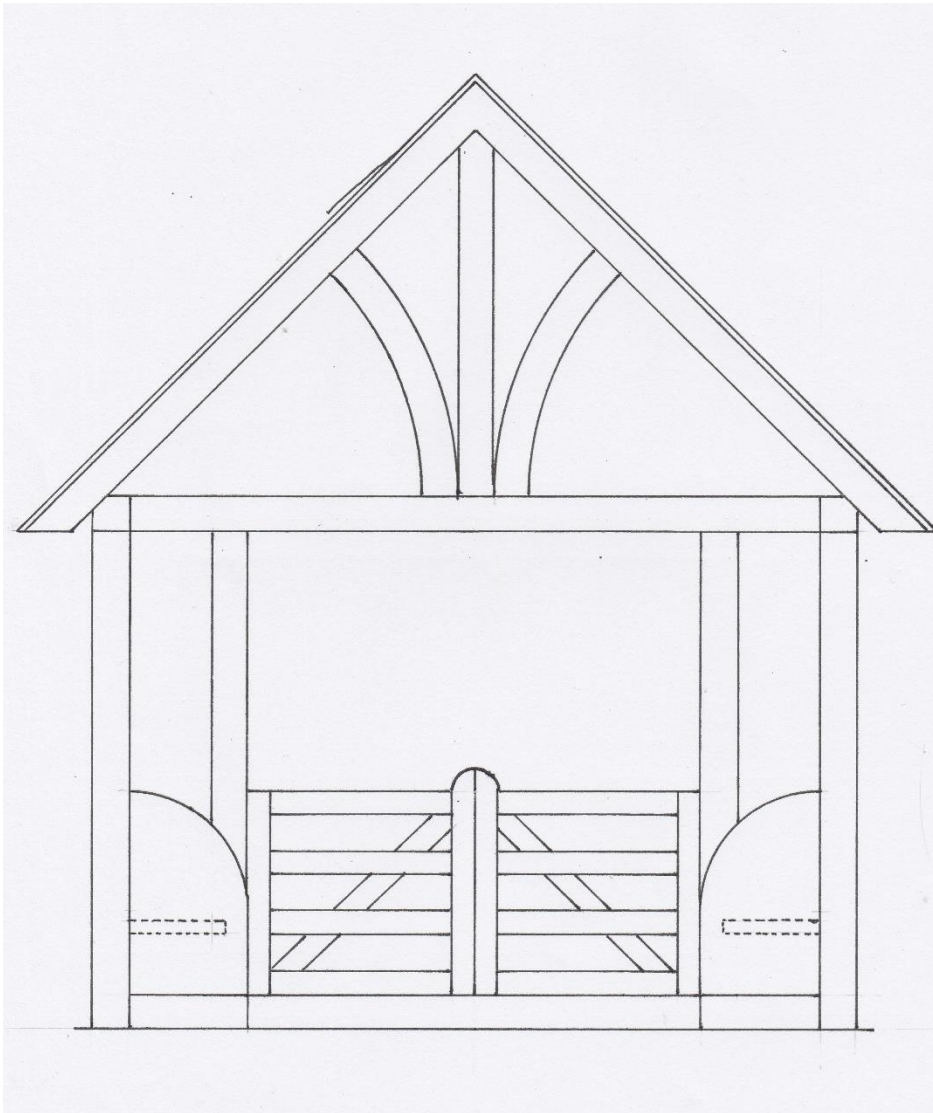
Base: L 2500mm; W 3500mm, H 1000mm

Gate: H 2100mm, W 1900mm

Seats: L 1900mm, W 400mm

21 May 2016

Do not scale



Binegar Cemetery - sketch of lych gate all of wood

Front view is from Station Road with shown at rear and seats shown in hatched lines.

Dimensions are similar to the lych gate on a stone base. The width of the base is, however, slightly narrower as thick stone piers are not present.

On the side view, there is solid wood panelling between the upright supports.